



Government of India
Ministry of Earth Sciences
India Meteorological Department



Press Release

Date: 26th March, 2025

Time of Issue: 1300 hours IST

Subject: Isolated Heavy rainfall/snowfall likely over Kashmir on 26th & 27th March.

i. Realised weather during past 24 hours till 0830 hours IST of today, the 26th March 2025 (Annexure I):

- ❖ **Hailstorms reported** at isolated locations over North Interior Karnataka.
- ❖ **Squally/Gusty winds** prevailed at isolated locations over North Interior Karnataka and south Madhya Maharashtra.
- ❖ **For more details of realised weather, kindly refer Annexure I**

Temperature:

- ❖ Temperature observations during past 24 hours till 0830 hours IST of today are provided in **Annexure II.**

ii. Weather Systems, Forecast and Warnings (Annexure III & IV):

- ❖ A Western Disturbance as a trough in middle and upper tropospheric levels runs roughly along Long. 60°E to the north of Lat. 25°N. A cyclonic circulation lies over central Pakistan & neighbourhood in lower tropospheric levels. Under their influence:
 - ✓ **Isolated to scattered** light/moderate rainfall accompanied with **thunderstorm, lightning & gusty winds (30-50 kmph)** likely over Jammu-Kashmir-Ladakh-Gilgit-Baltistan-Muzaffarabad, Himachal Pradesh, Uttarakhand and Punjab on 26th & 27th March.
 - ✓ **Heavy rainfall/snowfall** likely at isolated places over Kashmir; heavy rainfall over Jammu and light to moderate snowfall over Ladakh on 26th & 27th March.
 - ✓ **Hailstorm** very likely at isolated places over Himachal Pradesh today.
 - ✓ **Strong Surface winds (25-35 kmph)** very likely at isolated places over Punjab during 26th-28th and Haryana Chandigarh & Delhi during 27th-29th March.
 - ✓ **Dust raising winds (20-30 kmph)** very likely at isolated places over West Rajasthan on 26th & 27th March.
 - ✓ **Heavy rainfall/snowfall** likely at isolated places over Arunachal Pradesh on 28th & 29th March.
- ❖ A trough runs from south Chhattisgarh to Gulf of Mannar across interior Maharashtra, interior Karnataka, interior Tamil Nadu in lower tropospheric levels. Under its influence:
 - ✓ **Isolated to scattered** light/moderate rainfall accompanied with **thunderstorm, lightning & gusty winds (speed 30-50 kmph)** likely over south Madhya Maharashtra, Konkan & Goa on 26th; Karnataka, Kerala & Mahe and Tamilnadu Puducherry & Karaikal on 26th & 27th March, 2025.

Temperature Forecast:

- ❖ No significant change in maximum temperatures over plains of Northwest India during next 24 hours and fall by 3-4°C thereafter.
- ❖ Gradual rise in maximum temperatures by 2-3°C likely over East India during next 3-4 days and fall by 2-3°C thereafter.
- ❖ No significant change in maximum temperatures over Gujarat state and Interior Maharashtra during next 3 days and rise by 2-3°C thereafter.
- ❖ Gradual rise in maximum temperatures by 2-3°C likely over Central India during next 3 days and no significant change thereafter.

Heat wave and Hot & Humid weather warning:

- ❖ **Heat wave conditions very likely in isolated pockets of interior Odisha on 29th & 30th March.**
- ❖ **Hot day conditions very likely in isolated pockets of West Uttar Pradesh on 26th & 27th and Gangetic West Bengal on 28th March.**
- ❖ **Hot & humid weather conditions very likely to prevail in isolated pockets of Gujarat Region on 29th & 30th; Coastal Andhra Pradesh & Yanam during 28th-30th March.**

iv. Weather conditions and forecast over Delhi/NCR during 26th March to 29th March, 2025 (Annexure V)

For more details, kindly refer National Weather Bulletin:

https://mausam.imd.gov.in/responsive/all_india_forecast_bulletin.php

For District wise warnings refer: <https://mausam.imd.gov.in/responsive/districtWiseWarningGIS.php>

ANNEXURE I

Significant weather reported during past 24 hours till 0830 hours IST of today:

- ❖ **Light/moderate Rainfall** observed at a few places over Coastal Karnataka; at isolated places over Jammu-Kashmir-Ladakh-Gilgit-Baltistan-Muzaffarabad, Himachal Pradesh, Arunachal Pradesh, Konkan & Goa, Madhya Maharashtra, Coastal Andhra Pradesh & Yanam, Telangana, Rayalaseema, Interior Karnataka, Kerala & Mahe and Tamilnadu Puducherry & Karaikal.
- ❖ **Thunderstorm reported** at isolated locations over Kerala & Mahe, Lakshadweep, Karnataka, Rayalaseema, Konkan & Goa and Madhya Maharashtra.

Rainfall recorded (in cm):

- ❖ **Kerala & Mahe:** Kayamkulam(dist Alapuzha) 6, Vaikkom(dist Kottayam) 5, Nooranad(dist Alapuzha) 4, Varkala (dist Thiruvananthapuram) 3, Kottayam (dist Kottayam) 3, Punalur (dist Kollam) 3, Kanjirappally (dist Kottayam) 2,
- ❖ **North Interior Karnataka:** Yedrami (dist Kalaburgi) 3,
- ❖ **Coastal Andhra Pradesh & Yanam:** Vepada (dist Vizianagaram) 2

Hailstorm recorded:

- ❖ **North Interior Karnataka:** Gadag

- ❖ Yesterday, Maximum Temperatures has risen by 2-3°C over some parts of Bihar, Gangetic West Bengal; by 1-2°C over many parts of Uttar Pradesh, Haryana Chandigarh & Delhi, Madhya Pradesh, Chhattisgarh, Vidarbha, Odisha, Telangana and no significant change of rest parts of the country.
- ❖ Maximum Temperatures were in the range of 37-41°C over many parts of Haryana Chandigarh & Delhi, Rajasthan, Gujarat state, interior Maharashtra, Madhya Pradesh, Odisha, south peninsular India; 32-36°C over Konkan & Goa, Uttar Pradesh, Bihar, Gangetic West Bengal, Andaman & Nicobar Islands, Lakshadweep, Assam & Meghalaya, Mizoram, Tripura and 22-32°C over rest parts of the country. **(Fig.1)**
- ❖ Maximum Temperatures were **markedly above normal (5.1°C or more)** at isolated places over Himachal Pradesh and Haryana Chandigarh-Delhi, West Uttar Pradesh; **appreciably above normal (3.1°C to 5.0°C)** at isolated places over Jammu-Kashmir-Ladakh-Gilgit-Baltistan-Muzaffarabad, Punjab, West Madhya Pradesh, Gujarat Region, Assam & Meghalaya, Rajasthan; **above normal (1.6°C to 3.0°C)** at a few places over Saurashtra & Kutch, Konkan & Goa; at isolated places over Uttarakhand, East Uttar Pradesh, East Madhya Pradesh, Marathwada, Nagaland, Manipur, Mizoram & Tripura, Sub Himalayan West Bengal & Sikkim. These were **below normal (-3.0°C to -1.6°C)** at isolated places over Gangetic West Bengal, Jharkhand, Telangana and near normal over rest parts of the country Yesterday, the highest maximum temperature of **41.5°C was reported at Ahmedabad (Gujarat Region)** over the country. **(Fig.2)**

Fig. 1: Maximum Temperatures

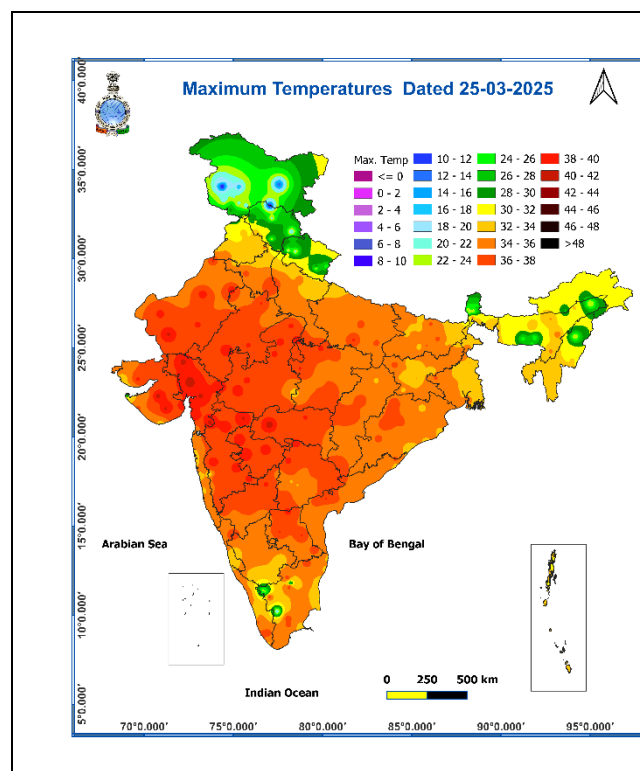
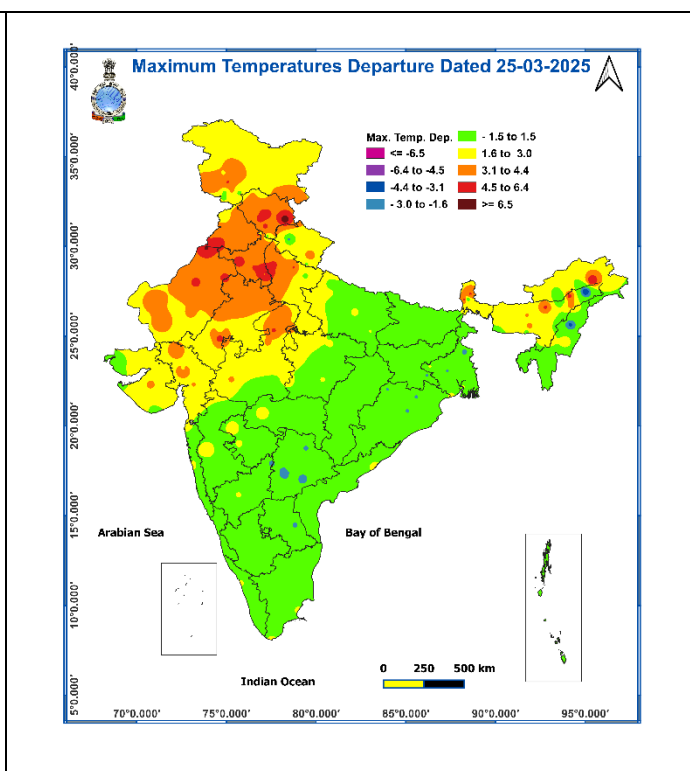
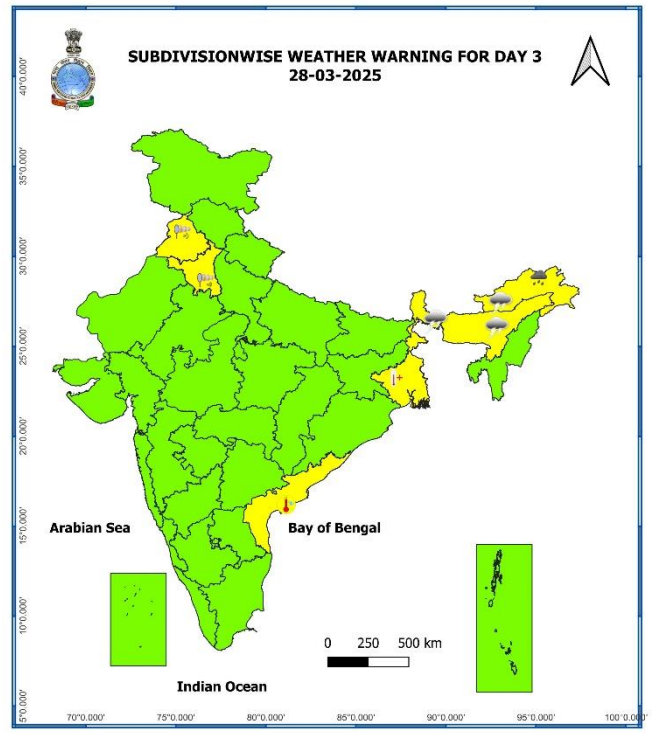
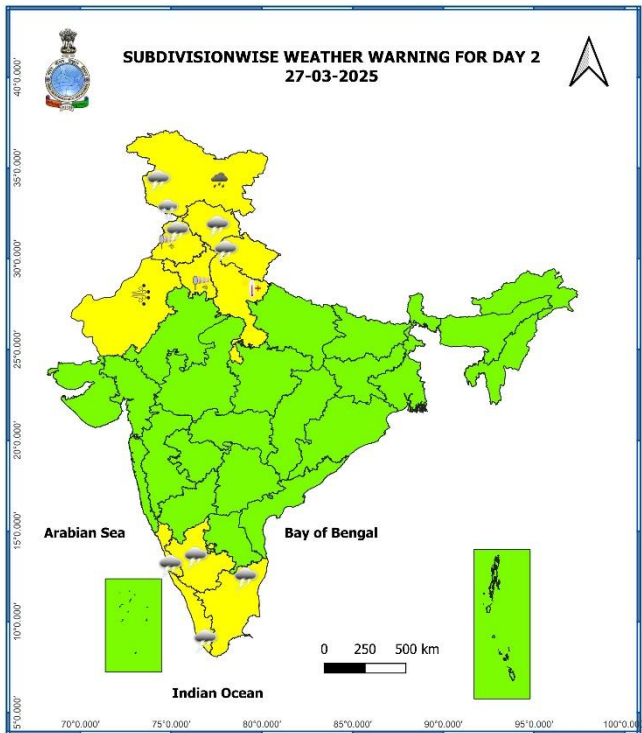
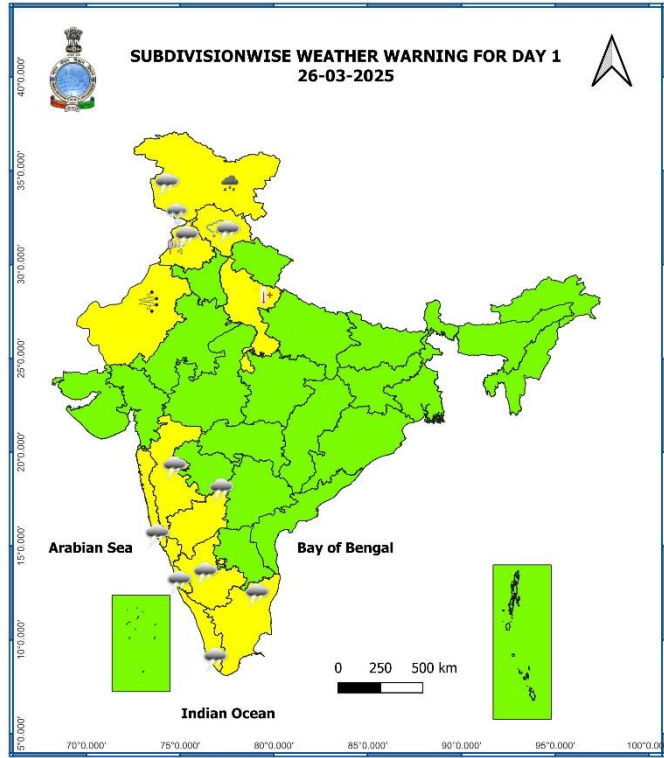


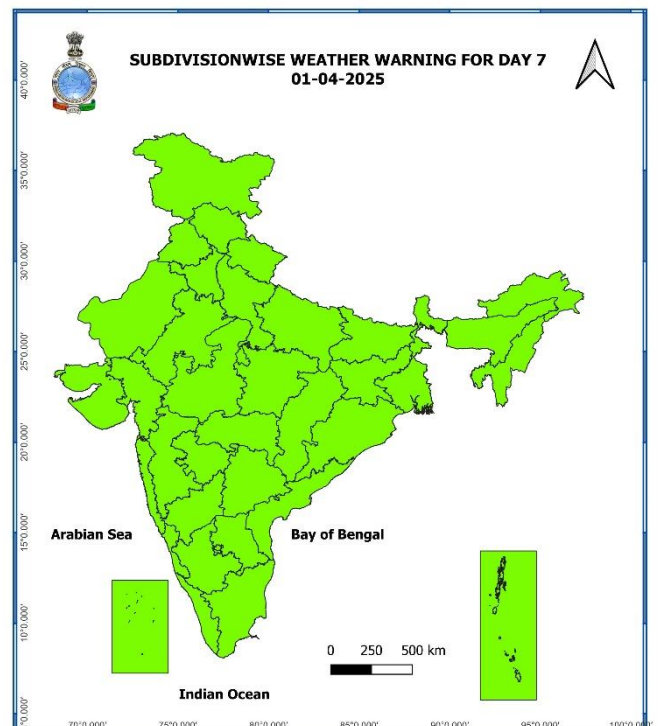
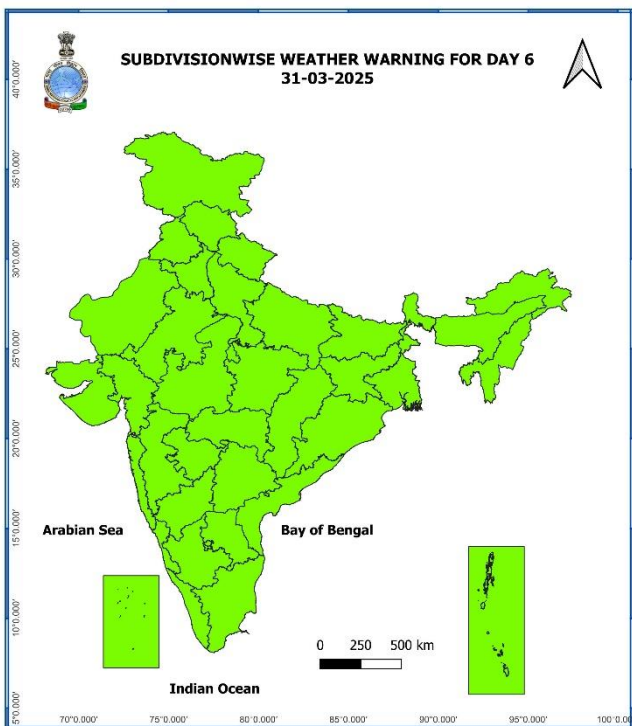
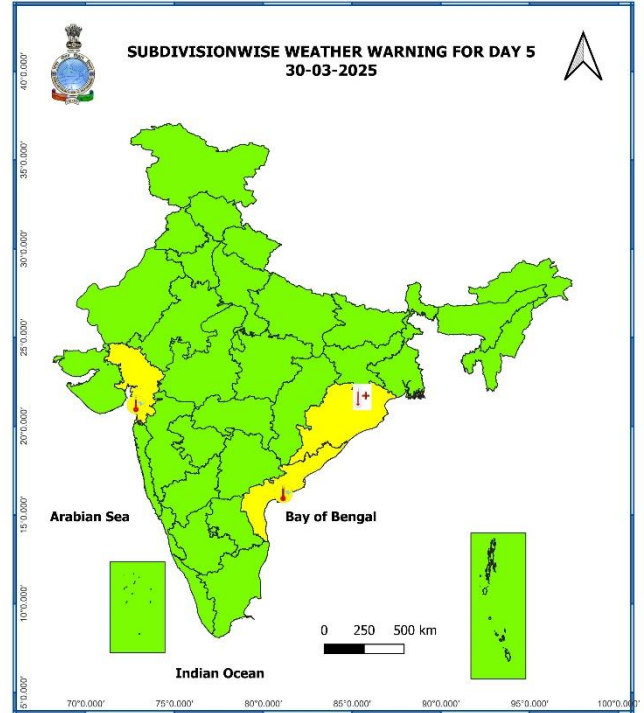
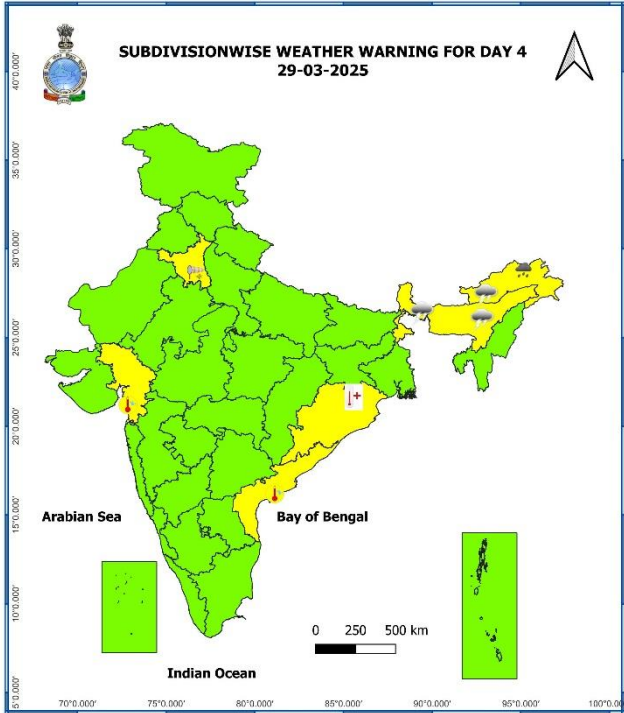
Fig. 2: Departure of Maximum Temperatures



7 Days Rainfall Forecast								
S. No.	Subdivision	26-Mar	27-Mar	28-Mar	29-Mar	30-Mar	31-Mar	01-Apr
		Day 1	Day 2	Day 3	Day 4	Day 5	Day 6	Day 7
1	ANDAMAN & NICOBAR ISLANDS	DRY	DRY	DRY	DRY	DRY	ISOL	SCT
2	ARUNACHAL PRADESH	ISOL	ISOL	FWS	FWS	SCT	ISOL	ISOL
3	ASSAM & MEGHALAYA	DRY	DRY	ISOL	ISOL	ISOL	ISOL	ISOL
4	NAGALAND, MANIPUR, MIZORAM & TRIPURA	ISOL	ISOL	ISOL	ISOL	ISOL	ISOL	ISOL
5	SUB-HIMALAYAN WEST BENGAL & SIKKIM	DRY	ISOL	SCT	ISOL	DRY	ISOL	DRY
6	GANGETIC WEST BENGAL	DRY	DRY	DRY	DRY	DRY	DRY	DRY
7	ODISHA	DRY	DRY	DRY	DRY	DRY	DRY	DRY
8	JHARKHAND	DRY	DRY	DRY	DRY	DRY	DRY	DRY
9	BIHAR	DRY	DRY	DRY	DRY	DRY	DRY	DRY
10	EAST UTTAR PRADESH	DRY	DRY	DRY	DRY	DRY	DRY	DRY
11	WEST UTTAR PRADESH	DRY	DRY	DRY	DRY	DRY	DRY	DRY
12	UTTARAKHAND	ISOL	ISOL	ISOL	DRY	DRY	DRY	DRY
13	HARYANA CHANDIGARH & DELHI	DRY	DRY	DRY	DRY	DRY	DRY	DRY
14	PUNJAB	ISOL	ISOL	DRY	DRY	DRY	DRY	DRY
15	HIMACHAL PRADESH	SCT	SCT	DRY	DRY	DRY	DRY	DRY
16	JAMMU & KASHMIR AND LADAKH	FWS	FWS	ISOL	DRY	DRY	DRY	DRY
17	WEST RAJASTHAN	DRY	DRY	DRY	DRY	DRY	DRY	DRY
18	EAST RAJASTHAN	DRY	DRY	DRY	DRY	DRY	DRY	DRY
19	WEST MADHYA PRADESH	DRY	DRY	DRY	DRY	DRY	DRY	DRY
20	EAST MADHYA PRADESH	DRY	DRY	DRY	DRY	DRY	DRY	DRY
21	GUJARAT REGION	DRY	DRY	DRY	DRY	DRY	DRY	DRY
22	SAURASHTRA & KUTCH	DRY	DRY	DRY	DRY	DRY	DRY	DRY
23	KONKAN & GOA	ISOL	DRY	DRY	ISOL	ISOL	DRY	DRY
24	MADHYA MAHARASHTRA	ISOL	DRY	DRY	ISOL	ISOL	ISOL	ISOL
25	MARATHAWADA	ISOL	DRY	DRY	DRY	DRY	ISOL	ISOL
26	VIDARBHA	DRY	DRY	DRY	DRY	DRY	DRY	DRY
27	CHHATTISGARH	DRY	DRY	DRY	DRY	DRY	DRY	DRY
28	COASTAL ANDHRA PRADESH & YANAM	ISOL	DRY	DRY	DRY	DRY	DRY	DRY
29	TELANGANA	DRY	DRY	DRY	DRY	DRY	DRY	DRY
30	RAYALASEEMA	DRY	DRY	DRY	DRY	DRY	DRY	DRY
31	TAMILNADU PUDUCHERRY & KARAIKAL	ISOL	ISOL	ISOL	DRY	DRY	DRY	DRY
32	COASTAL KARNATAKA	SCT	ISOL	DRY	DRY	DRY	DRY	DRY
33	NORTH INTERIOR KARNATAKA	ISOL	DRY	DRY	DRY	DRY	DRY	DRY
34	SOUTH INTERIOR KARNATAKA	ISOL	ISOL	DRY	DRY	DRY	DRY	DRY
35	KERALA & MAHE	SCT	SCT	ISOL	ISOL	ISOL	ISOL	ISOL
36	LAKSHADWEEP	DRY	DRY	DRY	DRY	DRY	DRY	DRY

- As the lead period increases forecast accuracy decreases.





- Action may be taken based on **ORANGE AND RED COLOUR** warnings.
- Vulnerable regions likely urban and hilly areas action may be initiated for heavy rainfall warning.
- As the lead period increases forecast accuracy decreases.

Detailed district wise Multi Hazard weather warning for next five days available at <https://mausam.imd.gov.in/responsive/districtWiseWarningGIS.php>

Weather forecast over Delhi/NCR during 26th Mar. to 29th Mar. 2025**Past Weather:**

There has been a rise in minimum and maximum temperatures upto 02°C over Delhi/NCR during the past 24 hours. The maximum and minimum temperatures over Delhi are in the range of 36 to 39°C and 17 to 20°C respectively. The minimum temperature was above normal upto 02°C and maximum temperature above normal upto 06°C at most places. Mainly clear sky conditions with predominant surface wind from the variable direction with wind speeds less than 10 to 12 kmph prevailed during the past 24 hours. Mainly clear sky conditions with wind speed less than 06 kmph from the southwest direction prevailed over the region in the forenoon today.

Weather Forecast:

26.03.2025: Mainly clear sky. The maximum temperature over Delhi is likely to be in the range of 38 to 40°C. The predominant surface wind will likely be from the west direction with a wind speed of less than 12 kmph till evening. It would decrease thereafter becoming less than 10 kmph from the west direction during the night.

27.03.2025: Mainly clear sky. Strong surface winds (speed 20 – 30 kmph). The maximum and minimum temperatures over Delhi are likely to be in the range of 37 to 39°C and 18 to 20°C respectively. The predominant surface wind will likely be from the west direction with a wind speed of 12-14 kmph during morning hours. The wind speed will gradually increase thereafter becoming 18-20 kmph from the west direction during the afternoon. It will increase becoming less than 24 kmph from the west-northwest direction during evening and night.

28.03.2025: Mainly clear sky. Strong surface winds (speed 20 – 30 kmph). The maximum and minimum temperatures over Delhi are likely to be in the range of 34 to 36°C and 17 to 19°C respectively. The predominant surface wind will likely be from the west-northwest direction with a wind speed of 16-18 kmph during morning hours. The wind speed will gradually increase becoming 18-20 kmph from the west-northwest direction in the afternoon. It will decrease becoming less than 16 kmph from the northwest direction during evening and night.

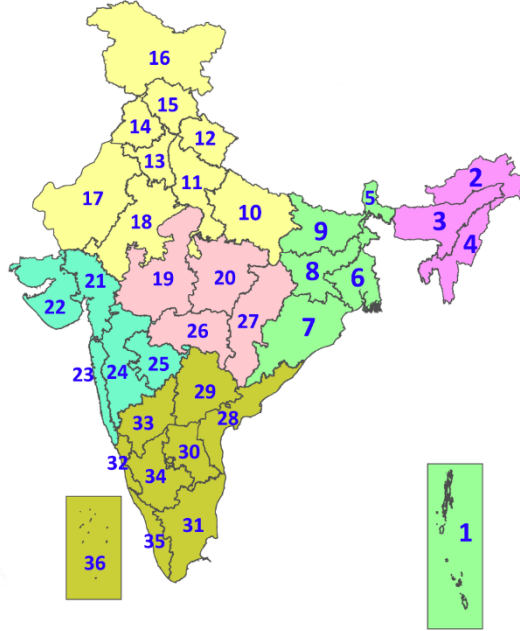
29.03.2025: Partly cloudy sky. Strong surface winds (speed 20 – 30 kmph). The maximum and minimum temperatures over Delhi are likely to be in the range of 34 to 36°C and 15 to 17°C respectively. The predominant surface wind will likely be from the northwest direction with a wind speed of 12-14 kmph during morning hours. The wind speed will gradually increase becoming 16-20 kmph from the northwest direction in the afternoon. It will decrease becoming less than 14 kmph from the northwest direction during evening and night.

Legends & abbreviations:

- ❖ **Heavy Rain:**64.5-115.5mm; **Very Heavy Rain:**115.6-204.4mm; **Extremely Heavy Rain:** >204.4mm.
- ❖ **Obsy:** Observatory; **AWS:** Automatic Weather Station; **ARG:** Automatic Rain Gauge; **dist:** District; **NH:** National Highway; **KVK:** Krishi Vigyan Kendra; **DVC:** Damodar Valley Corporation; **PTO:** Part Time Office, **Aero:** Aerodrome, **IAF:** Indian Air Force.
- ❖ **Region wise classification of meteorological Sub-Divisions:**
 - **Northwest India:** Western Himalayan Region (Jammu-Kashmir-Ladakh-Gilgit-Baltistan-Muzaffarabad, Himachal Pradesh and Uttarakhand); Punjab, Haryana-Chandigarh-Delhi; West Uttar Pradesh, East Uttar Pradesh, West Rajasthan and East Rajasthan.
 - **Central India:** West Madhya Pradesh, East Madhya Pradesh, Vidarbha and Chhattisgarh.
 - **East India:** Bihar, Jharkhand, Sub-Himalayan West Bengal & Sikkim; Gangetic West Bengal, Odisha and Andaman & Nicobar Islands.
 - **Northeast India:** Arunachal Pradesh, Assam & Meghalaya and Nagaland, Manipur, Mizoram & Tripura.
 - **West India:** Gujarat Region, Saurashtra & Kutch, Konkan & Goa, Madhya Maharashtra and Marathawada.
 - **South India:** Coastal Andhra Pradesh & Yanam, Telangana, Rayalaseema, Coastal Karnataka, North Interior Karnataka, South Interior Karnataka, Kerala & Mahe, Tamil Nadu, Puducherry & Karaikal and Lakshadweep.

LEGENDS

1. अंडमान और निकोबार द्वीपसमूह
2. अरुणाचल प्रदेश
3. असम और मेघालय
4. नागालैंड, मणिपुर, मिजोरम और त्रिपुरा
5. उप-हिमालयी पश्चिम बंगाल और सिक्किम
6. गंगीय पश्चिम बंगाल
7. ओडिशा
8. झारखंड
9. बिहार
10. पूर्वी उत्तर प्रदेश
11. पश्चिम उत्तर प्रदेश
12. उत्तराखंड
13. हरियाणा, चंडीगढ़ और दिल्ली
14. पंजाब
15. हिमाचल प्रदेश
16. जम्मू और कश्मीर और लद्दाख
17. पश्चिम राजस्थान
18. पूर्वी राजस्थान
19. पश्चिम मध्य प्रदेश
20. पूर्वी मध्य प्रदेश
21. गुजरात
22. सौराष्ट्र
23. कोंकण और गोवा
24. मध्य महाराष्ट्र
25. मराठवाड़ा
26. विदर्भ
27. छत्तीसगढ़
28. तटीय आंध्र प्रदेश और यनम
29. तेलंगाना
30. रायलसीमा
31. तमिलनाडु, पुडुचेरी और कराईकल
32. तटीय कर्नाटक
33. आंतरिक उत्तरी कर्नाटक
34. आंतरिक दक्षिणी कर्नाटक
35. केरल और माहे
36. लक्षद्वीप



1. Andaman & Nicobar Islands
2. Arunachal Pradesh
3. Assam & Meghalaya
4. Nagaland, Manipur, Mizoram & Tripura
5. Sub-Himalayan West Bengal & Sikkim
6. Gangetic West Bengal
7. Odisha
8. Jharkhand
9. Bihar
10. East Uttar Pradesh
11. West Uttar Pradesh
12. Uttarakhand
13. Haryana, Chandigarh & Delhi
14. Punjab
15. Himachal Pradesh
16. Jammu & Kashmir and Ladakh
17. West Rajasthan
18. East Rajasthan
19. West Madhya Pradesh
20. East Madhya Pradesh
21. Gujarat
22. Saurashtra
23. Konkan & Goa
24. Madhya Maharashtra
25. Marathwada
26. Vidarbha
27. Chhattisgarh
28. Coastal Andhra Pradesh & Yanam
29. Telangana
30. Rayalaseema
31. Tamilnadu, Puducherry & Karaikal
32. Coastal Karnataka
33. North Interior Karnataka
34. South Interior Karnataka
35. Kerala & Mahe
36. Lakshadweep

SPATIAL DISTRIBUTION (% of Stations reporting)

% Stations	Category	% Stations	Category
76-100	Widespread (WS/Most Places)	26-50	Scattered (SCT/A Few Places)
51-75	Fairly Widespread (FWS/Many Places)	1-25	Isolated (ISOL)

- | | | |
|----------------------|----------------------|--------------|
| Fog | Heavy Snow | Cold Wave |
| Heavy Rain | Dust Storm | Cold Day |
| Very Heavy Rain | Heat Wave | Ground Frost |
| Extremely Heavy Rain | Warm Night | |
| Thunder & Lightning | Hot Day | |
| Hailstorm | Hot & Humid | |
| Dust Raising Winds | Strong Surface Winds | |

COLOUR CODED WARNING

No Warning (No Action)
Watch (Be Aware)
Alert (Be Prepared To Take Action)
Warning (Take Action)

Probabilistic Forecast

Terms	Probability of Occurrence (%)
Unlikely	< 25
Likely	25 - 50
Very Likely	50 - 75
Most Likely	> 75

* Red colour warning does not mean "Red Alert", Red colour warning means "Take Action".
Forecast and Warning for any day is valid from 0830 hours IST of day till 0830 hours IST of next day.
For more details, kindly visit <https://mausam.imd.gov.in> or contact: 011-2434-4599
(Service to the Nation since 1875)

DEFINITION/CRITERIA

Rain/ Snow *

Heavy: 64.5 to 115.5 mm/cm *
Very Heavy: 115.6 to 204.4 mm/cm *
Extremely Heavy: > 204.4 mm/cm *

Heat Wave

When maximum temperature of a station reaches $\geq 40^\circ\text{C}$ for plains and $\geq 30^\circ\text{C}$ for hilly regions
(a) Based on Departure from normal

Heat Wave: Maximum Temperature Departure from normal 4.5°C to 6.4°C .
Severe Heat Wave: Maximum Temperature Departure from normal $\geq 6.5^\circ\text{C}$

(b). Based on Actual maximum temperature

Heat Wave: When actual maximum temperature $\geq 45^\circ\text{C}$.
Severe Heat Wave: When actual maximum temperature $\geq 47^\circ\text{C}$

(c). Criteria for heat wave for coastal stations

When maximum temperature departure is $> 4.5^\circ\text{C}$ from normal. Heat Wave may be described provided maximum temperature $\geq 37^\circ\text{C}$

Warm Night

When maximum temperature remains 40°C

Warm Night: When minimum temperature departure 4.5°C to 6.4°C .
Severe Warm Night: When minimum temperature departure $> 6.4^\circ\text{C}$.

Cold Wave

When minimum temperature of a station $\leq 10^\circ\text{C}$ for plains and $\leq 0^\circ\text{C}$ for hilly regions.
(a). Based on departure

Cold Wave: Minimum Temperature Departure from normal -4.5°C to -6.4°C .
Severe Cold Wave: Minimum Temperature Departure from normal $\leq -6.5^\circ\text{C}$

(b) Based on actual Minimum Temperature (for Plains only)

Cold Wave : When Minimum Temperature is $\leq 4.0^\circ\text{C}$
Severe Cold Wave: When Minimum Temperature is $\leq 2.0^\circ\text{C}$

(c) For Coastal Stations

When Minimum Temperature departure is $\leq -4.5^\circ\text{C}$ & actual Minimum Temperature is $\leq 15^\circ\text{C}$

Cold Day

When minimum temperature of a station $\leq 10^\circ\text{C}$ for plains and $\leq 0^\circ\text{C}$ for hilly regions
Based on departure

Cold Day: Maximum Temperature Departure from normal -4.5°C to -6.4°C .
Severe Cold Day: Maximum Temperature Departure from normal $\leq -6.5^\circ\text{C}$

Fog

Phenomenon of small droplets suspended in air and the horizontal visibility $< 1\text{km}$

Moderate Fog: When the visibility between 500-200 metres
Dense Fog: when the visibility between 50- 200 metres
Very Dense Fog: when the visibility < 50 metres

Thunderstorm

Sudden electrical discharges manifested by a flash of light (Lightning) and a sharp rumbling sound (thunder)

Dust/Sand Storm

An ensemble of particles of dust or sand energetically lifted to great heights by a strong and turbulent wind.

Frost

Ice deposits on ground

Air temperature $\leq 4^\circ\text{C}$ (over Plains)

Squall

A strong wind that rises suddenly, lasts for atleast 1 minute.

Moderate: Wind speed 52-61 kmph
Severe: Wind speed 62-87 kmph
Very Severe: Wind speed > 87 kmph

Sea State

Effect of various waves in the sea over specific area

Rough to very rough: Wind speed 41-62 kmph (22-33 knots) & Wave height 2.5-6 metre
High to very high: Wind speed 63-117 kmph (34-63 knots) & Wave height 6-14 metre
Phenomenal: Wind speed > 117 kmph (> 63 knots) & Wave height > 14 metre

Cyclone

Cyclonic Storm: Wind speed 62-87 kmph (34-47 knots)
Severe Cyclonic Storm: Wind speed 88-117 kmph (48-63 knots)
Very Severe Cyclonic Storm: Wind speed 118-165 kmph (64 - 89 knots)
Extremely Severe Cyclonic Storm: Wind speed 166-220 kmph (90 -119 knots)
Super Cyclone Storm: Wind speed > 220 kmph (> 119 knots)

* Red colour warning does not mean "Red Alert", Red colour warning means "Take Action".
Forecast and Warning for any day is valid from 0830 hours IST of day till 0830 hours IST of next day.
For more details, kindly visit <https://mausam.imd.gov.in> or contact: 011-2434-4599
(Service to the Nation since 1875)

Hot and Humid: When maximum temperatures remain 3°C above normal along with the above normal relative humidity.